

vtech[®]

Instruction Manual

Magical Makeover **Fairy Fox**



VTech understands that a child's needs and abilities change as they grow and with that in mind we develop our toys to teach and entertain at just the right level...

Electronic Learning Computers

Cool, aspirational and inspiring computers for curriculum related learning

vtech Baby

Toys that will stimulate their interest in different textures, sounds and colours

I am...

...responding to colours, sounds and textures

...understanding cause and effect

...learning to touch, reach, grasp, sit-up, crawl and toddle

Pre-School

Interactive toys to develop their imagination and encourage language development

I want...

...to get ready for school by starting to learn the alphabet and counting

...my learning to be as fun, easy and exciting as can be

...to show my creativity with drawing and music so my whole brain develops

I need...

...challenging activities that can keep pace with my growing mind

...intelligent technology that adapts to my level of learning

...National Curriculum based content to support what I'm learning at school

Birth-36 months



3-6 years



4-10 years



To learn more about this and other VTech® products, visit www.vtech.co.uk

INTRODUCTION

Let's have fun with the **Magical Makeover Fairy Fox!** The included makeup tool can be transformed into a Magic Brush and Hair Colour Styler. Use the Magic Brush to light up Fairy Fox's eyelids, horn, and ears, giving her a beautiful, sparkling makeover! Switch the tool to the Hair Colour Styler to change the colour of her fringe and tail! You can also enjoy trendy fairy songs, soothing music, and other fun games with Fairy Fox!



INCLUDED IN THE PACKAGE

- **Fairy Fox**
- Hair Colour Styler Tool (Installed in the Handle)
- Magic Brush Tool
- 6 Hair clips
- 4 AA batteries (in Fairy Fox) and 2 AAA batteries (Installed in the Handle), for demo purpose only.
- Quick Start Guide

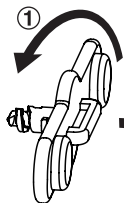
WARNING

All packing materials such as tape, plastic sheets, packaging locks, removable tags, cable ties, cords and packaging screws are not part of this toy and should be discarded for your child's safety.

NOTE

Please save this Instruction Manual as it contains important information.

Unlock the Packaging Locks

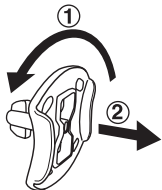


① Turn the packaging locks anticlockwise several times.

② Pull out the packaging locks and discard.

① Rotate the packaging locks 90 degrees anticlockwise.

② Pull out the packaging locks and discard.



GETTING STARTED

Exiting Try-Me Mode

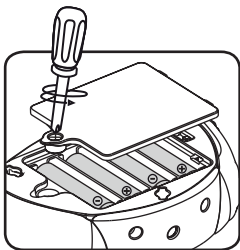
The **Magical Makeover Fairy Fox** is in Try-Me mode in the packaging. After unpacked, uninstall the **Hair Colour Styler Tool** and install the **Magic Brush Tool** to the **Magic Handle**. (Refer to Transform to **Magic Brush** section for details.)

Twist the **Rotary Ring** on the **Magic Brush** to turn it on and select any colour. Press the **Star Button** to activate the **Magical Makeover Fairy Fox**, then point the **Magic Brush** Sensor to light up the Horn, Ears, or Eyelids. You'll hear a light up sound effect, and the program will restart, exiting Try-Me mode.



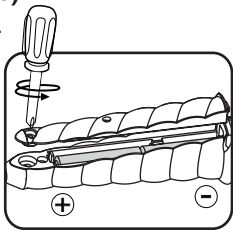
Battery Installation (Fairy Fox)

1. Make sure the unit is turned **Off**.
2. Locate the battery cover on the back of the unit. Use a screwdriver to loosen the screw and then open the battery cover.
3. If used batteries are present, remove these batteries from the unit by pulling up on one end of each battery.
4. Install 4 new AA (LR6/AM-3) batteries following the diagram inside the battery box (for best performance, alkaline batteries or fully charged Ni-MH rechargeable batteries are recommended).
5. Replace the battery cover and tighten the screw to secure.



Battery Installation (Magic Handle)

1. Remove the tool from the Magic Handle.
2. Use a screwdriver to loosen the screw and open the Battery Compartment cover.
3. Remove the old batteries by lifting one end of each battery.
4. Install 2 new AAA (LR03/AM-4) batteries (alkaline batteries are recommended for best performance), following the diagram in the Battery Compartment.
5. Replace the Battery Compartment cover and tighten the screw to secure it. Reattach the tool to the Magic Handle.



WARNING:

Adult assembly is required. Batteries are included and must be installed by an adult before the toy is given to children. Keep batteries out of reach of children.

IMPORTANT: BATTERY INFORMATION

- Insert batteries with the correct polarity (+ and -).
- Do not mix old and new batteries.
- Do not mix alkaline, standard (carbon-zinc) or rechargeable batteries.
- Only batteries of the same or equivalent type as recommended are to be used.
- Do not short-circuit the supply terminals.
- Remove batteries during long periods of non-use.
- Remove exhausted batteries from the toy.
- Dispose of batteries safely. Do not dispose of batteries in fire.

RECHARGEABLE BATTERIES:

- Remove rechargeable batteries (if removable) from toy before charging.
- Rechargeable batteries are only to be charged under adult supervision.
- Do not charge non-rechargeable batteries.

Disposal of batteries and product



The crossed-out wheellie bin symbols on products and batteries, or on their respective packaging, indicates they must not be disposed of in domestic waste as they contain substances that can be damaging to the environment and human health.



The chemical symbols Hg, Cd or Pb, where marked, indicate that the battery contains more than the specified value of mercury (Hg), cadmium (Cd) or lead (Pb) set out in the Batteries and Accumulators Regulation.

The solid bar indicates that the product was placed on the market after 13th August, 2005.

 Please dispose of your product and batteries responsibly.

In the UK, give this toy a second life by disposing of it at a small electricals collection point* so all of its materials can be recycled.

Learn more at:

www.vtech.co.uk/recycle

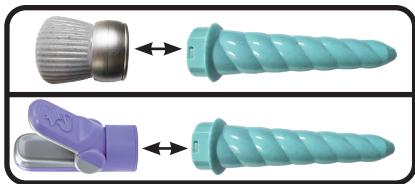
www.vtech.com.au/sustainability

* Visit www.recyclenow.com to see a list of collection points near you.

Transformation Guide

Removing the tool from the Magic Handle

Hold the **Magic Handle** with one hand and use the other hand to grip the **Rotary Ring** of the **Magic Brush** or the base of the **Hair Colour Styler**. Then, pull up to remove it from the **Magic Handle**.

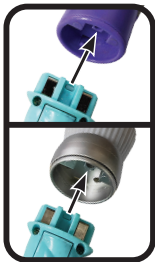


Transform to Magic Brush

Hold the **Rotary Ring** of the **Magic Brush**, align it with the **Magic Handle**, and then push it into place. You will hear a click when it is properly installed.

Transform to Hair Colour Styler

Hold the base of the **Hair Colour Styler**, align it with the **Magic Handle**, and push it into place. You will hear a click when it is properly installed.



Quick Guide

Slide the **Power** and **Volume Switch** to either the **Low** or **High Volume** level to turn the unit on. It will automatically switch to Makeup Time. Use the **Magic Brush** to apply makeup to different parts of the **Magical Makeover Fairy Fox** or change her hair colour with the **Hair Colour Styler**.

Press the **Star Button** to proceed to the next activity. Press the **Heart Button** to start gameplay in different modes.

Product Features

1. Power and Volume Switch

Move the switch to the **Low Volume** or **High Volume** position to turn the unit on. Slide the switch to the **Off position** to turn it off.



2. Magic Brush

Twist the **Rotary Ring** to select from different colours. One of the options is to turn the brush off.

Hold the **Magic Brush** near Magical Makeover Fairy Fox's horn, ears, and eyelids to light up with the selected colour.

Tips: Ensure the top of the brush is pointed directly at the horn, ears, or eyelids for an effective and quick response. The distance should not be too far.

When the battery level is low, a red light will flash on the **Magic Brush**. Replace the batteries in the **Magic Handle** to continue using it.

Note: For installation instructions, refer to the Transformation Section in this manual to attach the **Magic Brush** tool to the **Magic Handle**.

3. Horn, Eyelids and Ears Light and Sensors

The Magical Makeover Fairy Fox's horn, ears, and eyelids can light up in different colours using the **Magic Brush**. When she sings or plays music, beautiful light effects will occur!

Note: For optimal sensing performance, avoid using the **Magic Brush** in direct sunlight or in overly bright environments.



4. Hair Colour Styler

Use the **Hair Colour Styler** on Magical Makeover Fairy Fox's fringe and tail (only effective on the white hair) to transform it into trendy fairy purple hair.

Instructions:

- Place a strand of hair in the middle of the **Hair Colour Styler** plates.
- Start at the top of the hair and move to the bottom of the hair, you will notice the hair turn purple.
- Repeat steps A to C several times to increase the intensity of the purple colour.

The purple colour will fade in approximately 1 minute, depending on the intensity. The higher the intensity, the longer the colour will last before fading.



Note: For installation instructions, refer to the Transformation Section in this manual to attach the **Hair Colour Styler** tool to the Magic Handle.

5. Star Button

Press the **Star Button** on Magical Makeover Fairy Fox's paw to switch between different activities. There are 8 activities to enjoy.

6. Heart Button

Press the **Heart Button** on Magical Makeover Fairy Fox's paw to activate game actions in the activities.

Activity	Game action of pressing Heart Button
Makeup Time	Listen to her thoughts.
Show Time	Go to the next song.
Time for a Mission	Repeat the mission question.
Time to Groove	Repeat the dancing action.

Catch the Magic Light	Listen to the game instruction.
Magic Light Sequence	Repeat the game question.
Fairy Predicts	Hold the Heart Button to ask Fairy Fox a Question.
Soothing Time	Go to the next song.

7. Head Movement

Fairy Fox's head moves when she talks and sings.

8. Wings

Fairy Fox's wings glow gently when she talks and sings.

9. Auto Power Off

To preserve battery life, the **Magical Makeover Fairy Fox** will automatically power off after a period of inactivity. She can be turned back on by pressing the **Star Button** or **Heart Button** on her paw. In the Makeup Time activity, the auto-off time is 3 minutes, while for other activities, it's 1 minute.

ACTIVITIES

Press the **Star Button** on Magical Makeover Fairy Fox's paw to toggle between different activities.

1. Makeup Time

When turned on, Fairy Fox will begin in **Makeup Time**.

Play with the Magic Brush:

After transforming the **Magic Brush**, twist the **Rotary Ring** to select a makeup colour. Then, point the tip of the **Magic Brush** towards Magical Makeover Fairy Fox's ears, horn, and eyelids to light them up with the chosen colour.

Note: For optimal sensing performance, avoid using it in direct sunlight or in overly bright environments.

Play with the Hair Colour Styler:

After preparing the **Hair Colour Styler**, you can change Magical Makeover Fairy Fox's fringe and tail (white hair only) to trendy fairy purple hair.

Instructions:

- A. Place a strand of hair in the middle of the **Hair Colour Styler** plates.
- B. Start at the top of the hair and move to the bottom of the hair, you will notice the hair turn purple.
- C. Repeat steps A to C several times to increase the intensity of the purple colour.

The purple colour will fade within about 1 minute, depending on the intensity. The higher the intensity, the longer the colour will stay before fading.

Fairy Fox's fun thoughts:

Magical Makeover Fairy Fox will share her fun thoughts from time to time. You can also press the **Heart Button** on her paw to hear her fun thoughts instantly.

2. Show Time

Listen to Magical Makeover Fairy Fox sing 6 songs. When a song finishes, press the **Heart Button** on her paw, or light up any part with the **Magic Brush**, to play the next song. While Fairy Fox is singing, enjoy the beautiful lighting effects.

Refer to the Song Lyrics section for the lyrics of these 6 songs.

3. Time for a Mission

Magical Makeover Fairy Fox is ready for the show! Use the **Magic Brush** to apply makeup on her using the requested colours. Each mission has a time limit.

4. Time To Groove

It's time to dance! When the music starts, Magical Makeover Fairy Fox will invite you to dance with fun animal actions. Use your imagination to mimic the animal movements until the music stops.

5. Catch the Magic Light

When the magic light appears on Magical Makeover Fairy Fox's ears, eyelids, and horn, use the **Magic Brush** to catch it! Simply turn on the **Magic Brush** and point the tip towards the lit-up areas to capture the magic light. The magic light will escape faster at higher levels!

6. Magic Light Sequence

Do you have a good memory? Magical Makeover Fairy Fox has a memory challenge for you! The magic light will light up in a sequence. Remember the sequence, then use the **Magic Brush** to light up the parts in the same order. If you forget the sequence, don't worry—just press the **Heart Button** on Fairy Fox's paw to repeat it and try again.

Tip: The light up sounds can help you remember the sequence too!

7. Fairy Predicts

Ask Magical Makeover Fairy Fox a question, and she will use her magic power to predict the answer! Don't take it too seriously—sometimes her magic doesn't work perfectly. Hold the **Heart Button** on her paw and ask a yes or no question. Release the button, and Fairy Fox will give her answer.

Note: This feature is just for fun and the answers given should not be taken seriously.

8. Soothing Time

Enjoy a relaxing moment with Magical Makeover Fairy Fox, accompanied by soothing music and light effects. Fairy Fox will help you unwind.

Press the **Heart Button** to play the next song.

Song Lyrics

Song 1: Beautiful Fairy Fox

I'm a beautiful Fairy Fox,
Living in a magical world.
I love all the colours of the rainbow,
Painting the world with my beautiful colours!
Let's go play, find some magical treasures!

Song 2: Friends Forever

With my friend, the world is so bright,
Side by side, we laugh and play.
Through sunny days or rainy skies,
Friends forever, and ever!
Hand in hand, through thick and thin,
Life's brighter with you in it,
We lift each other up, yes we do,
Friends forever, and ever!

Song 3: Mirror Mirror

Mirror, mirror, let's get ready!
It's fun to play with makeup!
Come on, let's put our hair up,
With glitter and gloss, I'm gonna shine,
Shine so bright, let's get ready together.

Song 4: Rainbow's Beat

Can you jump and twirl? Reach up high!
Can you reach for the colours in the sky?
Step to the left and dance,
Slide to the right, and groove,

Clap your hands to the rainbow's beat, ooh!

Dancing with the rainbow, yeah!

Song 5: The One That Knows It All

I am Fairy Fox, come play with me,

Wave the magic brush and you will see,

I'll give you an answer like magic, magic!

I am the one that knows it all!

Fairy Fox, (ask me a question) will it rain today?

(Ask me a question) Can pigs fly through the sky?

I am the one that knows it all!

Song 6: Time To Party

Put on your shoes, it's party time (ooh),

Tonight we're stars, let's light up the skies!

Dress up, laugh and dance around,

Hair and makeup, fun's all around,

Twirl and spin, let the music play,

The party of the year is here today!

Time to party, let the music play!

CARE & MAINTENANCE

1. Keep the unit clean by wiping it with a slightly damp cloth.
2. Keep the unit out of direct sunlight and heat source.
3. Remove the batteries when the unit is not in use for an extended period of time.
4. Do not drop the unit on hard surfaces and do not expose the unit to moisture or water.

TROUBLE SHOOTING

If the problem persists, please contact our Consumer Services Department, and a service representative will be happy to help you.

Issue	Possible Solution
Fairy Fox stops working	<ol style="list-style-type: none">1. Move the Power and Volume Switch to the Off position.2. Let it stand for a few minutes.3. Move the Power and Volume Switch to the On position again. It should return to normal and be ready to play.4. If it still doesn't work, replace the entire set of batteries with new ones.
Cannot light up Fairy Fox's horn, ears or eyelids	<ol style="list-style-type: none">1. Ensure the top of the brush is pointed directly at the horn, ears, and eyelids for an effective and quick response. The distance should not be too far.2. Refer to the "Horn, Eyelids, and Ears Light and Sensors" section in this manual and follow the recommended pointing directions to try again.3. Avoid playing in direct sunlight or overly bright areas. If you're near a window during the day, try moving further away, as the sensor performance may be affected.
Magic Brush not working well	<ol style="list-style-type: none">1. Remove the Magic Brush Tool from the Magic Handle and reinstall it. Twist the ring to switch to a different colour. It should work properly.2. If it still doesn't work, replace the entire set of batteries in the Magic Handle.
Hair Colour Styler not working well	<ol style="list-style-type: none">1. Remove the Hair Colour Styler Tool from the Magic Handle and reinstall it. Press down the Hair Colour Styler plates, and it should work properly.2. If it still doesn't work, replace the entire set of batteries in the Magic Handle.
Red light on the Magic Brush	The battery level is too low. Replace the batteries in the Magic Handle to continue using.
The hair colour (changed by Hair Colour Styler) fades out	It is normal for the hair colour (applied with the Hair Colour Styler) to fade after about a minute. If it fades too quickly, try applying the Hair Colour Styler for a longer duration and repeat the process a few times to achieve a more even colour.

CONSUMER SERVICES

Creating and developing **VTech®** products is accompanied by a responsibility that we at **VTech®** take very seriously. We make every effort to ensure the accuracy of the information, which forms the value of our products. However, errors sometimes can occur. It is important for you to know that we stand behind our products and encourage you to call our Consumer Services Department with any problems and/or suggestions that you might have. A service representative will be happy to help you.

UK Customers:

Phone: 0330 678 0149 (from UK) or +44 330 678 0149 (outside UK)
Website: www.vtech.co.uk/support

Australian Customers:

Phone: 1800 862 155
Website: support.vtech.com.au

NZ Customers:

Phone: 0800 400 785
Website: support.vtech.com.au

PRODUCT WARRANTY/ CONSUMER GUARANTEES

UK Customers:

Read our complete warranty policy online at vtech.co.uk/warranty.

Australian Customers:

**VTECH ELECTRONICS (AUSTRALIA) PTY LIMITED –
CONSUMER GUARANTEES**

Under the Australian Consumer Law, a number of consumer guarantees apply to goods and services supplied by VTech Electronics (Australia) Pty Limited. Please refer to vtech.com.au/consumerguarantees for further information.

**Visit our website for more
information about our products,
downloads, resources and more.**

www.vtech.co.uk
www.vtech.com.au

